

Sensor Usage Guide

Delsys sensors have been designed and manufactured to the highest standards. They are sophisticated electronic devices that should be treated with care. Refer to your system manual for full documentation.*

- Always inspect the sensor prior to using. If any damage is observed- DO NOT use. Contact Delsys for assistance.
- Discontinue use if skin irritation or discomfort occurs. Immediately contact Delsys for assistance.

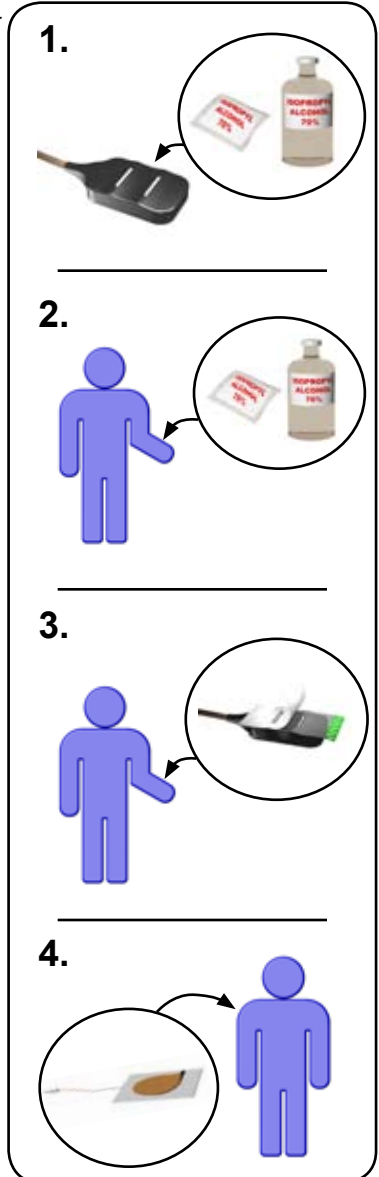
Instructions for Use

- 1. Clean the sensors** - The sensor housing and contacts should be cleaned with an Isopropyl Alcohol swab.
- 2. Clean the skin** - Clean the sensor sites and the reference site with an Isopropyl Alcohol swab.
- 3. Attach the sensor** - Attach the sensor to the skin using the Delsys Interfaces. Ensure that the sensor housing and the skin site are completely dry.
- 4. Attach the Reference pad** - Place the adhesive Reference pad away from the muscle(s) being tested.

For most applications, Delsys recommends not to use electrolytes or to remove hair cover. The above procedure normally yields high quality EMG signals. If you do not obtain noise-free signals then:

- a) Make sure that the Reference pad is firmly attached to the skin. Use the large pads supplied with your system.
- b) Ensure that the skin is properly prepared by cleaning, drying and removing excessive hair cover and dry dermis. *
- c) If you continue to have problems, carefully apply a small quantity of electrolyte on the contacts as described in the system's User Manual. Be careful not to apply electrolyte on the case of the sensor. *

* For complete details, refer to the User Manual, which can be found at www.delsys.com.



Technical Support

Delsys Inc. strives to manufacture the highest quality products for the most exacting needs. Our systems are designed to be safe, reliable and user-friendly. Please visit our web site regularly for product updates, new releases and technical information. Our product manuals, tutorials and “frequently asked questions” are regularly updated to provide you with a useful and comprehensive resource for achieving your research goals. Should you have any questions or concerns, do not hesitate to contact us via telephone or email to speak with a Customer Care Representative.

Disclaimer

DELSYS INC. makes no warranties, express or implied, as to the quality and performance of this product including but not limited to, any implied warranty of applicability for other than research uses by qualified individuals. DELSYS INC. shall not be liable to any person for any medical expenses or any direct or consequential damages resulting from any defect, failure or malfunction, whether a claim for such damages is based upon theory of warranty, contract, tort or otherwise. No representative, agent, or licensed practitioner is authorized to waive this disclaimer. DELSYS INC. makes no diagnosis or prescription by virtue of anything about this product.



www.delsys.com
delsys@delsys.com

Tel: (617) 236-0599
Fax: (617) 236-0549